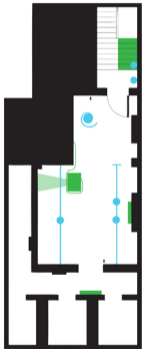


ACQUIRE ARTS

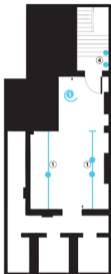
LIGHTING PLAN
AND
FLOOR LAYOUT







GROUND FLOOR

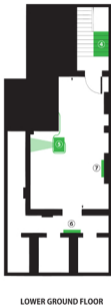


LOWER GROUND FLOOR

- ① Moveable lighting on rails (approx. 3 on each floor).
- ② The shelf has it's own lighting.
- ③ Lighting on the ceiling.
- ④ 2 lights embedded in the ceiling.
- ⑤ A spiral-styled light on the ceiling with 3 bulbs (moveable).

NOTE: There are lamps available at the venue.
We can also use the natural light on the ground floor to our advantage.





① At the entrance; outside the exhibition.
There will be vinyl lettering detailing the exhibition and the opening times.

② 'Interactive ball' installation.

③ The shelf, and the area around it, will be used to detail the exhibition to the audience and also to present extra visuals in terms of decoration.

④ 'Money' installation.

⑤ Video projection.

⑥ A poster will be placed here in order to create a barrier since the exhibition does not continue in the alcoves.

⑦ 'Interactive box' installation.

